



# WORLD TOWER

COMPANY, INC.

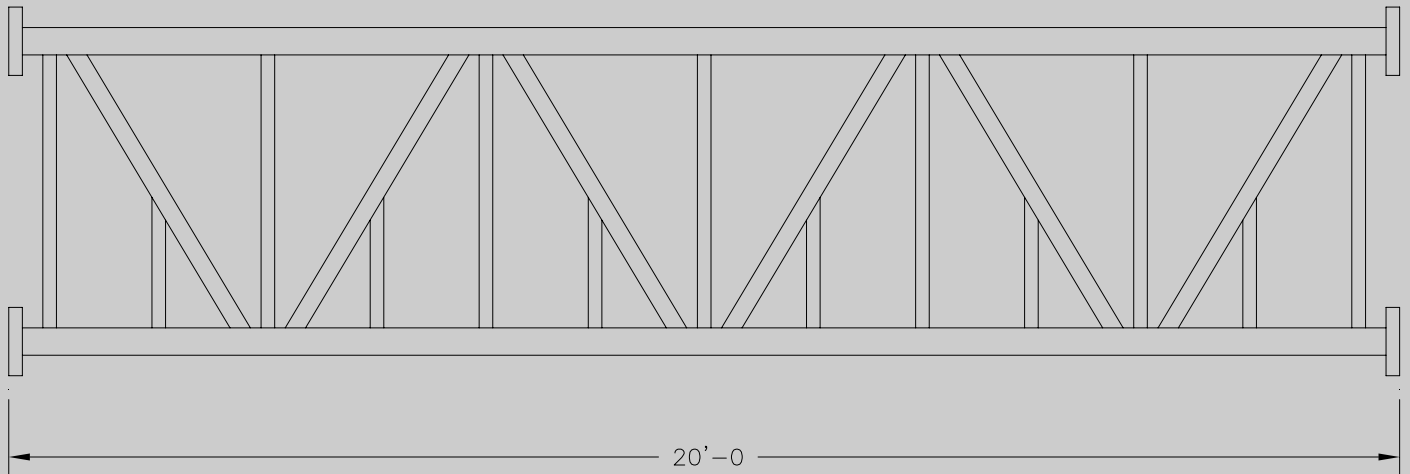
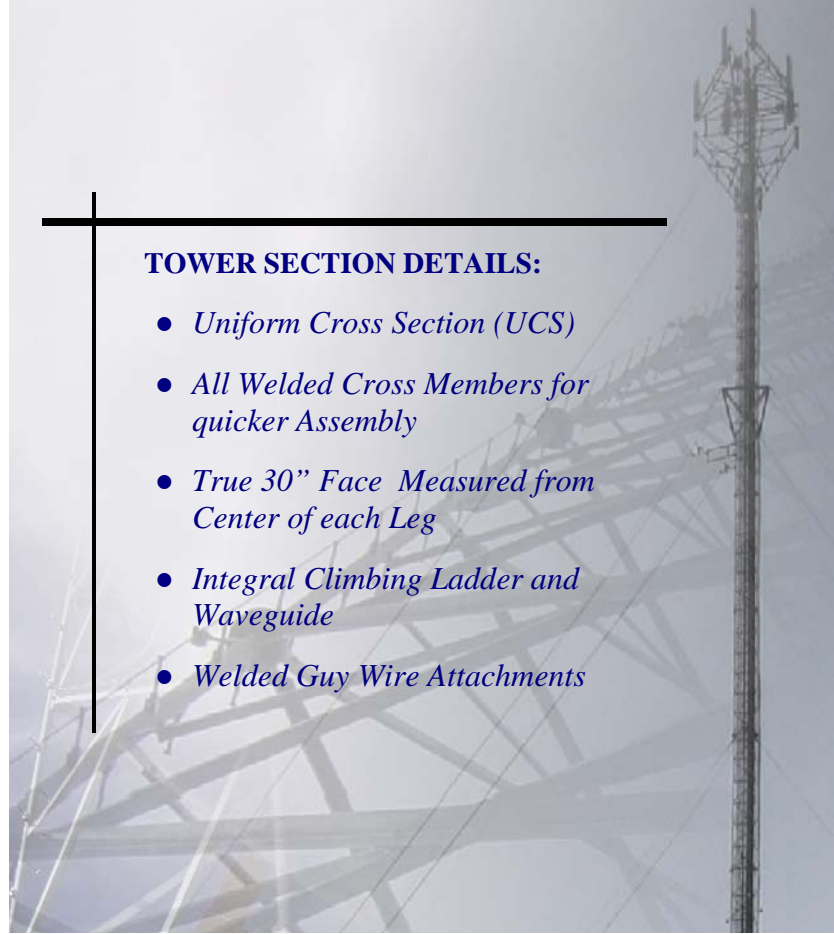
1213 Compressor Drive  
P.O. Box 508  
Mayfield, KY 42066

Phone: 270-247-3642  
Fax: 270-247-0909

[WWW.WORLDTOWER.COM](http://WWW.WORLDTOWER.COM)

## TOWER SECTION DETAILS:

- *Uniform Cross Section (UCS)*
- *All Welded Cross Members for quicker Assembly*
- *True 30" Face Measured from Center of each Leg*
- *Integral Climbing Ladder and Waveguide*
- *Welded Guy Wire Attachments*



SECTION ELEVATION

